



YOUR EVENT SOLUTION SPECIALIST

22/F, 8-10 Duddell Street, Central, Hong Kong

www.amcham.org.hk

spaces@amcham.org.hk



Day & Night





Pantry: The Center of Gravity





About the Community Hub

Located on Duddell Street in the heart of Central, AmCham Community Hub is the first-of-its-kind meeting point for members and guests to network, build connection, and brainstorm new ideas in a collaborative environment. By integrating a flexible, hybrid work style, the space is flexible and multi-functional that can be set up for different occasions, from workshops, VR experience, art galleries, seminars, networking events, board meetings, coffee catch-ups and of course, an open workspace for the staff.

With sustainability on top of our minds, the Hub incorporates energy-saving technologies to reduce carbon footprint and to bring awareness to the wider Hong Kong community.





*A flexible space with
numerous possibilities...*

- ✓ Workshops
- ✓ Classrooms
- ✓ Annual general meetings
- ✓ Small team meetings
- ✓ Round tables
- ✓ Seminars
- ✓ Happy hours and mixers/socials
- ✓ Team offsite meetings
- ✓ Watch parties
- ✓ Brand activations
- ✓ Popups
- ✓ Art Exhibitions
- ✓ Wellness workshops



Previous Events Highlights





Complimentary Amenities



2X HDTV Screens



Whiteboard with markers



Phone booths for confidential calls



Onsite support



Wireless microphones



High-speed WIFI connection



Full Hybrid event capabilities with Logitech Rally Bar systems



Avant-garde pantry with access to wine chiller, dishwasher and microwave



AppleTV & Background Music Control



HDMI cable



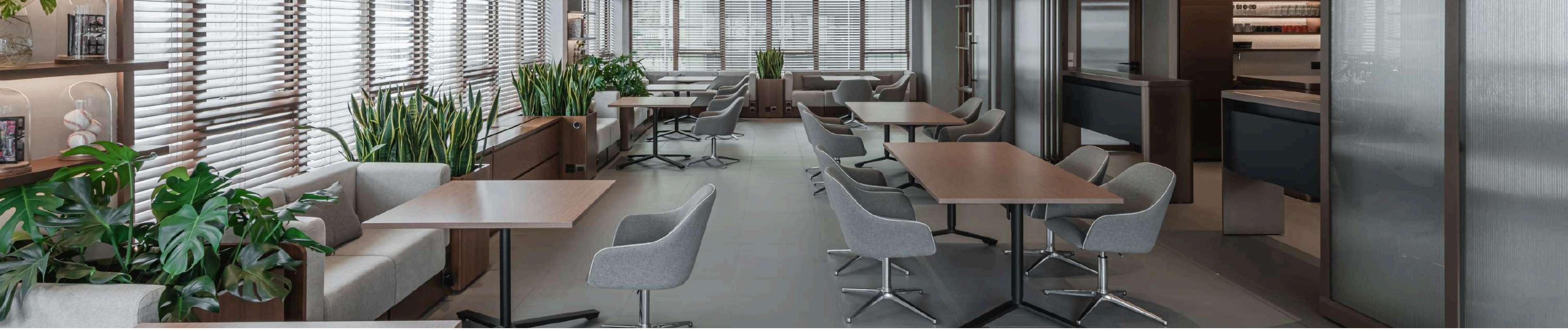
Podium



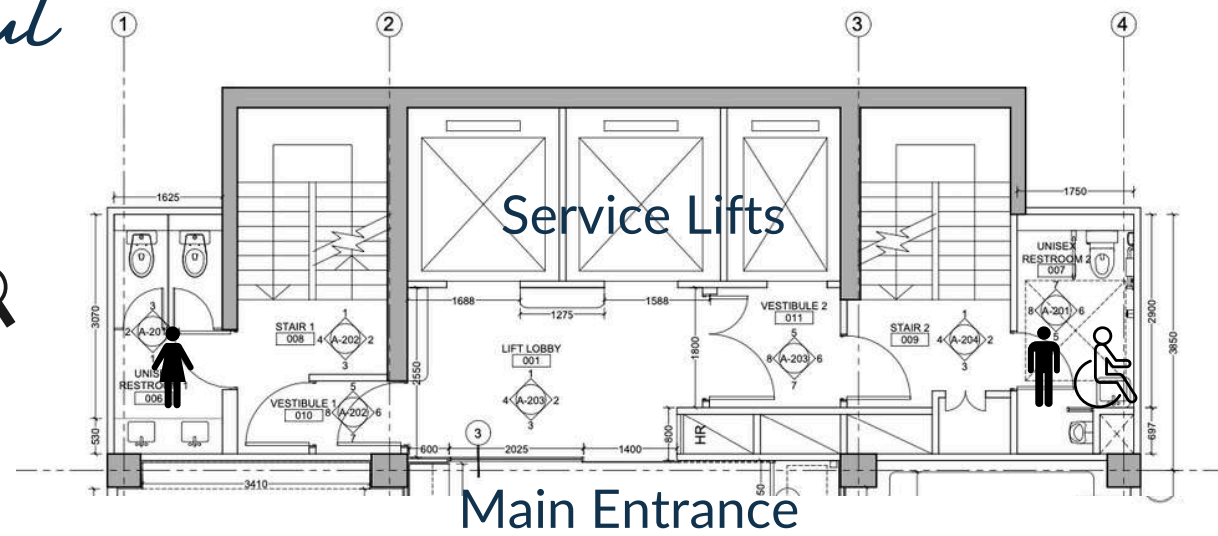
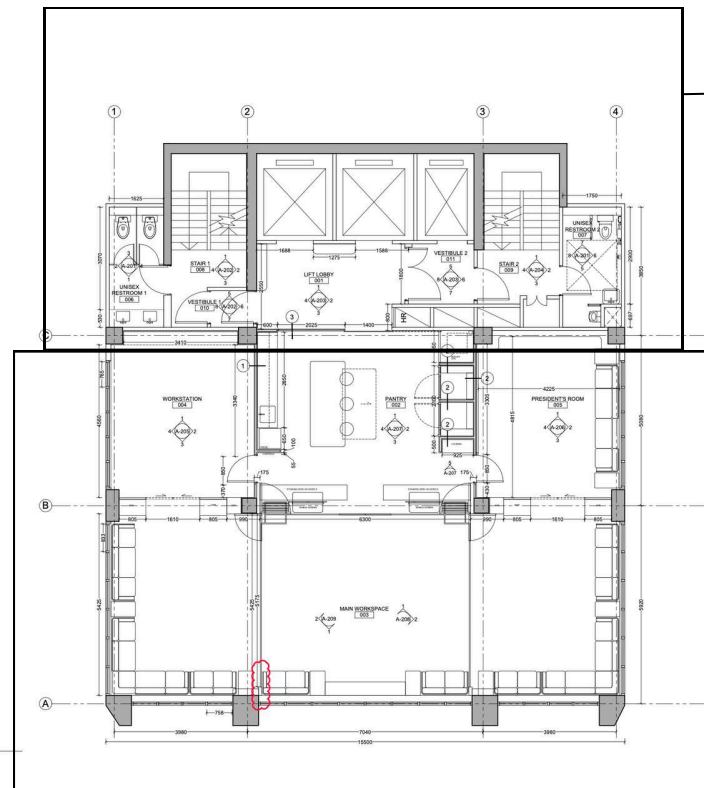
Private male & female washrooms

Lounge (Zones A, B & C)

| Style | Capacity |
|------------|----------|
| Standing | 100 |
| Theater | 65 |
| Classroom | 40 |
| Workshops | 40 |
| Roundtable | 25 |

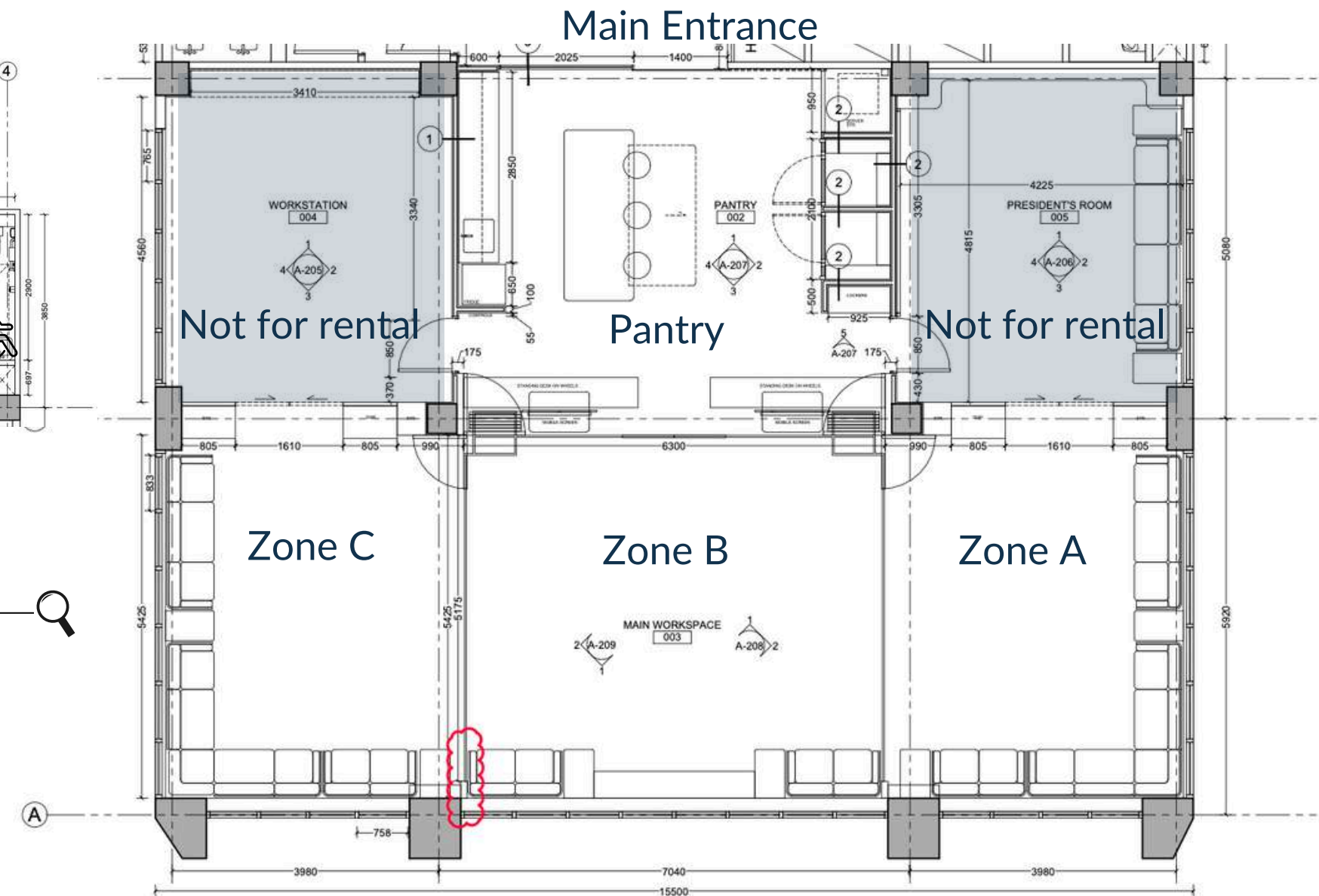


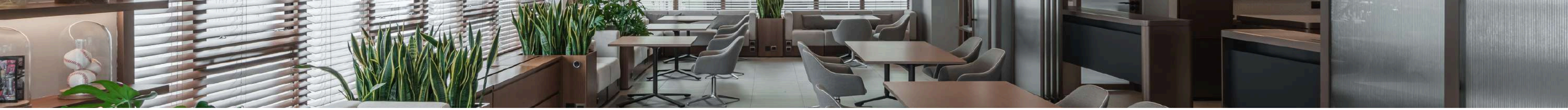
Floorplan & Layout



Total size: Approximately 2,250 sq. ft.

- Pantry: 344 sq. ft.
- Conference Room: 218 sq. ft.
- Lounge (Zones A, B & C): 1,301 sq. ft.

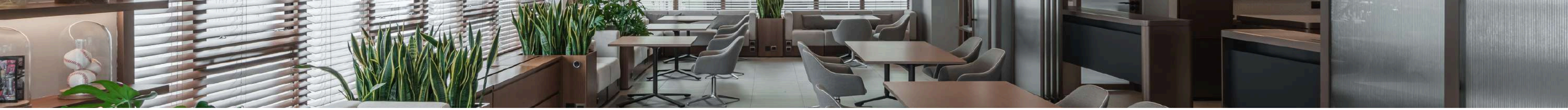




Standard Pricing Packages

| Package | Duration (hrs) | Lounge Area | Light Drinks | Alcohol | Price (HKD) |
|-------------------|----------------|-------------|--------------|---------|-------------|
| Short Rental | 1 | ✓ | ✓ | \$3,000 | \$10,000 |
| Standard Rental | 2 | ✓ | ✓ | \$3,000 | \$12,000 |
| Half-day Rental | 4 | ✓ | ✓ | \$3,000 | \$18,000 |
| Full day Rental 1 | 6 | ✓ | ✓ | ✓ | \$22,000 |
| Full day Rental 2 | 8 | ✓ | ✓ | ✓ | \$32,000 |

Note:
Catering incurs additional charges dependent on the final quotation from the vendor.



Half-day Rental Package

Duration: 4 Hours

Rental Area: Full Lounge

Maximum Capacity: 40 pax

Complimentary Drinks: Soft drinks (unlimited)

Alcohol: Available for an ***additional fee of \$3,000***

Catering External catering allowed or external vendor coordination

Notes: Perfect for ***workshops, panel discussions, fireside chats, team building, roundtable meetings***. Includes setup/breakdown time.

Price: **HKD 18,000**

Additional Services & Customization

AV Setup: Sound systems, 2 handheld microphones, 1 clip on microphone, 2 HDTV, HDMI cord and Wifi.

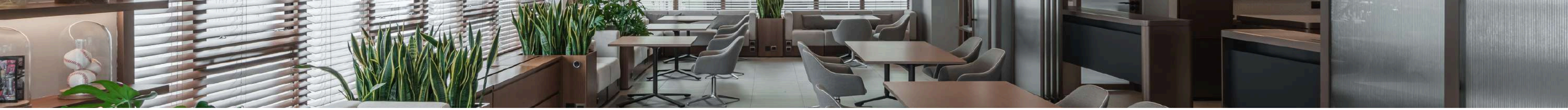
Exclusive Packages: For curated events, with personalized invitations, catering and invitation of AmCham Membership base, please contact us for a quotation. Each package can be tailored to fit your event's needs.



Exclusive Packages

| Package | Duration (hrs) | Lounge Area | Light Drinks | Alcohol | Catering (HKD) | Curations | Price (HKD) |
|-------------------|----------------|-------------|--------------|---------|----------------|---|-------------|
| Standard Rental | 2 | ✓ | ✓ | ✓ | \$5,000 | 1 complimentary EDM inviting our membership base to your event | \$24,000 |
| Half-day Rental | 4 | ✓ | ✓ | ✓ | \$5,000 | 1 complimentary EDM inviting our membership base to your event | \$28,000 |
| Full day Rental 1 | 6 | ✓ | ✓ | ✓ | ✓ | 1. 1 complimentary EDM inviting our membership base to your event 2. Curated 10 Guest lists from our membership base 3. Personalized Invitations to your Guests 4. Event listed on our AmCham’s Page | \$34,000 |
| Full day Rental 2 | 8 | ✓ | ✓ | ✓ | ✓ | | \$42,000 |

Note:
Catering incurs additional charges.



Half-day Rental Package

Duration: 4 Hours

Rental Area: Full Lounge

Maximum Capacity: 40 pax

Complimentary Drinks: Soft drinks and Alcohol (unlimited)

Catering HKD 5,000

Perks: ***1 complimentary EDM inviting our membership base to your event***

Price: **HKD 28,000**

Additional Services & Customization

AV Setup: Sound systems, 2 handheld microphones, 1 clip on microphone, 2 HDTV, HDMI cord and Wifi.



Panel Theatre

65 pax



Panel Theatre



Roundtable Meeting

20 pax



Roundtable Meeting



Cafe Style

25 pax



Classroom-Workshop

40 pax



Classroom-Workshop



U-shaped Theatre

25 pax



Culinary experience

We are happy to cater for your needs- from light refreshments to breakfast, lunch or cocktail. Kindly note below the vendors we work with:

Knead

- Customizable
- Breakfast, Lunch and Dinner
- Main Category: Canapes, Salads and sandwiches

Delany's

- Customizable
- Lunch and Dinner
- Main Category: Canapes

Maison Kayser

- Breakfast and Lunch
- Main Category: Sandwiches, baked goods and yogurts

Toasted

- Breakfast, Lunch and Dinner
- Main Category: Fruits and Meat Skewers, bun sliders, sandwiches and vegetable dips

Upon selection based off your preference, we will communicate with the vendor accordingly and provide you with their menu items.



Beverages Menu Available Options

Light Refreshments

Free flow

Nespresso Coffee
Lipton Tea Bag
Chinese Tea Bag

Coke
Coke Zero
Neon tiger Mekong Delta Mango
Neon tiger Passion Fruit & Calamansi
Neon tiger Pink Guava

Soda Water
Filtered Water

Alcoholic Refreshments

Free flow
Subject to additional charges depending on rental package

House Red
House White

20L Goose IPA Draft Beer Tap
20L Budweiser Draft Beer Tap

Only Pineapple
Only Guava
Only Lime



Pantry - Island Table





Event Hosting

We welcome groups to organize events & meetings at the Community Hub during weekends.

Contact us for the bespoke package!

Terms & Conditions

1. All requests for rental of facilities must be confirmed in writing.
2. In the event of cancellation, the following charges will apply:
 - Cancellation within 7 working days prior to the event – 50% of invoiced amount.
 - Cancellation within 3 working days prior to the event – 100% of invoiced amount.
3. Posters, banners, backdrops, etc. may not be attached to the projection screens, walls, or ceilings.
4. AmCham reserves the right to impose repair or cleaning charges on the client for mishandling of equipment or facilities during the rental period.
5. AmCham reserves the right to change the rental rates without prior notice.
6. In the case when Black Rainstorm Signal or Typhoon Signal No. 8 is hoisted, the event will be allowed to be postponed.



Project Designer: Edge Design Institute Ltd. & Architecture Commons Ltd.
Project Manager: Scott Lau
E&M Consultant: Pinebridge Consulting Ltd.
Technology Consultant: Vega Hong Kong
Contractor: Vivo Contracting Ltd.
Photographer: Kevin Mak @1km Studio



Community Hub

Space Rental